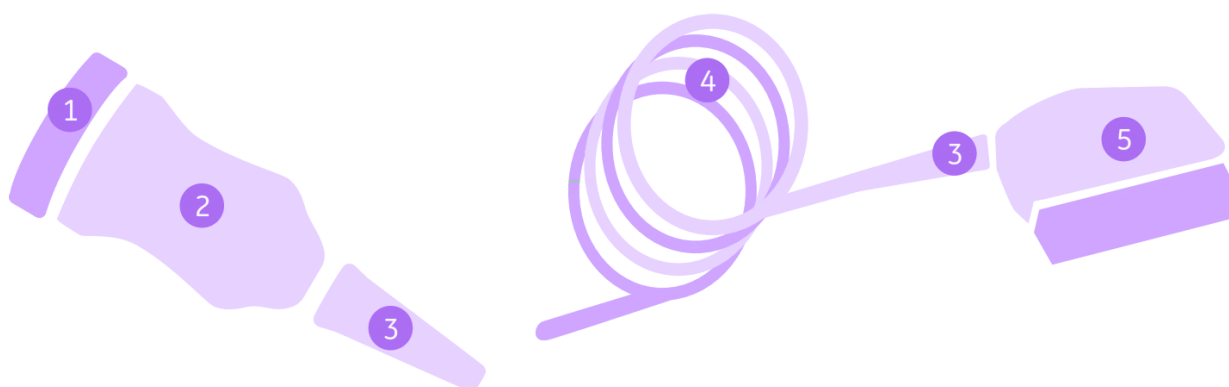


## Probe Care Pre-Scan Checklist



### Prior to use instructions

1. Acoustic lens or cap: check for cuts, tears, gouging, abrasion, swelling, bubbling, delamination or discoloration.
2. Transducer body (shaft, handle, & nose-piece): inspect for cracks, abrasions, or evidence of impact.
3. Strain relief and cable assembly: check for cracks, cuts, tears, abrasion, kinking or crushing
4. Cable assembly: check for discoloration or inflexibility of the transducer cable or strain-relief.
5. System connector: check for foreign objects, broken latches, or bent pins and shielding.



*Transoesophageal transducers (TOE):  
inspect the flexible portion for tears, bite holes, rips, or discoloration.*



#### **Warning: Cross-contamination**

Transducers with cracks, abrasions or tears may harbor dangerous contaminants or may tear protective sheaths used with the ultrasound transducers. Do not use transducers with any signs of damage.



#### **Warning: Electrical Leakage**

Non-hazardous voltage is present during normal transducer use. GE HealthCare recommends regular electrical safety leakage testing to help ensure operator and equipment safety.

For more information on probe care and handling procedures, go to: [Ultrasound Transducers](#)