




Advisory and Technology solutions for improving cost, quality and access in healthcare.

Manage equipment,
supervise maintenance
and optimise costs
with the greatest of ease





Manage equipment,
supervise maintenance
and optimise costs

with the greatest of ease

AssetPlus™ is the CMMS (Computerized Maintenance Management Solution) that opens the door both to better management of assets-related risks via rigorous tracking of maintenance activities and to budget optimisation via precise scheduling of investments, cost control and optimisation of assets usage.

AssetPlus™ enables you to manage maintenance operations, stocks, orders, risks, medical device vigilance, reminders, notifications etc., from the inventory of your assets pool and human and financial resources.

Specifically developed for the healthcare sector, AssetPlus™ is a multi-purpose solution combining multiple technologies, with intuitive, easy operation and is designed for all hospital teams: biomedical staff, general technical services, medical technicians, financial services, IT department and the care team.



AssetPlus™ is designed to meet the needs of hospital teams in terms of good time management, optimisation of human and financial resources and maintenance activity tracking, to ensure quality of care and patient safety.

Make life easy

In order to maximise time spent on your core activity, you need to be able to access all necessary information instantly, retrieve reliable and consistent data, collate it and use it via a specially designed tool that offers you the functionality you need.

AssetPlus™ is designed to make your life easier



Accessibility: IT equipment pool in real-time

With one click, AssetPlus™ offers you the possibility to create your connected IT assets within the AssetPlus' database. The information relating to each IT asset is afterwards updated within AssetPlus' database, in real time.

You can have daily access to your connected PC's ID: leasing and maintenance contract, cost and maintenance analysis produced by the IT department.

The technology: a library of specific Web Services allows you to collate information on your computer network via a free, open source (OCS) remote data collection tool.



Simplicity: easy, future-proof HIS integration

The integration of AssetPlus™ into the Hospital Information System is simple, and software updates allow for continuity as the system evolves.

Furthermore, data exchange can be automated or manual, for example the annual import of a catalogue or maintenance history.

The technology: a collection of modern web services that are easy to roll out, directly connected with the AssetPlus™ business rules, designed taking into account the obligatory values, the field dependencies and the format of data to be exchanged.

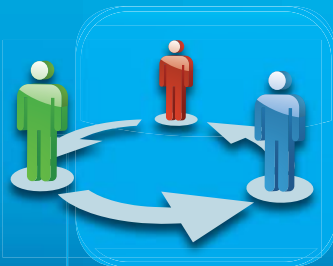
Optimise your resources



Prioritisation: an aid to maintenance activity management

AssetPlus™ allows you to select a priority level to assign to maintenance activities, whether preventive or corrective, and/or for the replacement of each piece of equipment. It is therefore possible to regulate daily workloads, design a consistent investment plan and collate all the necessary information in support of this plan.

The technology: The AssetPlus™ "priority and risk management" module allows you to program a formula specific to each piece of equipment, using its age, location, end-of-life date and costs incurred.



Mobility: stay connected

With the AssetPlus™ Live module, you can access your CMMS information and functionalities from wherever you are working. You can remotely receive new service requests from medical staff, collect or submit service reports, schedule maintenance, consult the inventory and supplier information.

The technology: the AssetPlus™ Live module works where WIFI access is available. Retrieved service reports are shown as simplified screens.



Interconnectivity: a specific service dedicated to medical staff

Thanks to AssetPlus™, each department has on-line ability to

- submit service requests, purchase requests and equipment loan requests
- access a log of its requests and maintenance
- track the progress of on-going service requests
- see details of services due under various maintenance contracts

To facilitate tracking of requests, the requesting department can also receive progress updates by email.

The technology: AssetPlus™ includes a web module specifically designed for medical staff, with dedicated and easy access.



Whilst taking into account potential risks, you should manage maintenance activity by using the best part of existing human resources, using the available budget to best effect, facilitating the implementation of optimal operation and new management methods.

AssetPlus™ is designed to strengthen financial performance



Safety: managing authorisations

With AssetPlus™, the undertaking of service activities can be made subject to verification of the operator's expertise. The software only allows a qualified technician, whether a member of staff or an external contractor, to work on a particular piece of equipment or in a particular environment.

The technology: the AssetPlus™ software can search a text or Excel file to verify whether a given person is authorised to carry out the work.



Organisation: better management of contracts and agreements

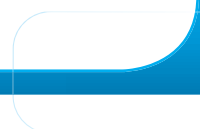
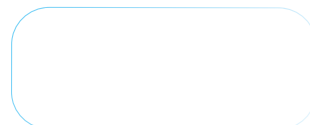
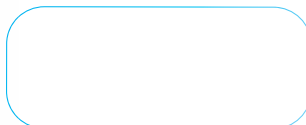
AssetPlus™ enables easy indexing of contracts and agreements, cross-referencing them with the equipment concerned and updating the contracts as necessary.




The technology: the new AssetPlus™ contract module offers the possibility to create your hospital's entire "contracts" database in just a few clicks. This database is also available to the medical staff and, where necessary, to external maintenance service providers.



Rationalisation: improve monitoring of equipment loans

AssetPlus™ enables easy monitoring of loan requests and records loan histories, whether the information comes from the medical staff or the biomedical team. This allows the equipment to be thoroughly checked and calibrated between each loan, thereby improving the traceability of maintenance and the safety of the equipment.



-  Biomedical department
-  Facilities departments
-  IT department

Support your recommendations

In order to influence decisions, you need to access relevant analytical data in order to present the results of your maintenance activity effectively, support your diagnostics, prepare the appropriate key facts, justify your recommendations and engage in effective dialogue with your management.

AssetPlus™ is designed to provide the analyses you need



Control:
monitoring scalable to the
desired level of information



Consolidation:
a multi-site solution for
monitoring at all levels



The AssetPlus™ Business Intelligence module allows the rapid and simple implementation of maintenance activity tracking

- for monitoring: analysis of weekly activity (number of maintenance jobs carried out, time required and related cost, per category of work, per sub-contractor and per department)
- and for planning: annual scheduling of maintenance work, of monitoring and investment decisions.

According to information needs, the analyses may be in summary form or comprehensive. It is therefore possible for the biomedical department to access a dashboard displaying activity relating to medical staff requests, updated in real-time.

AssetPlus™ enables a group of hospitals or clinics to track maintenance activity, both at groups' level, as well as each institution's level.

For groups, each hospital has access to shared and structural information, and standardised usage of the CMMS enables harmonised data analysis, once the relevant indicators for the group have been defined and common procedures have been implemented.

On the other hand, each user only accesses their own data concerning their planned maintenance, stocks of spare parts, equipment, and works.

The technology: advanced connection parameters can be set so that technical users, medical staff and external service providers can only consult and edit the data made accessible to them by the system administrator.

More about AssetPlus™

- AssetPlus™ does not require any installation on customer machines: it is organised around a relational database and operates in Terminal Server (RDS) mode and Web mode.
- Tablets, Smartphones and Pocket PCs share the same ORACLE® or Microsoft® SQL Server® database and the same Tomcat® Web server.
- AssetPlus™ can be used in local or hosted mode.

About GE Healthcare

GE Healthcare provides transformational medical technologies and services to meet the demand for increased access, enhanced quality and more affordable healthcare around the world. GE (NYSE: GE) works on things that matter - great people and technologies taking on tough challenges. From medical imaging, software & IT, patient monitoring and diagnostics to drug discovery, biopharmaceutical manufacturing technologies and performance improvement solutions, GE Healthcare helps medical professionals deliver great healthcare to their patients.

GE Healthcare Performance Solutions is a division of GE Healthcare. Performance Solutions combines advisory services with technology to help hospitals achieve a higher level of operational rigour by addressing patient safety needs, capacity and patient flow challenges, Asset Management challenges, current and future hospital planning & clinical transformation, leadership & strategy development and more. We work side-by-side with our hospital clients to help them realize their desired outcome through a combination of advisory services, technology and governance strategies. The end result is helping hospitals provide better quality care to their patients, enabling staff to spend more time with the patient rather than on administrative tasks all the while helping reduce unnecessary costs.

For more information please email GEHCinfo@ge.com

<http://www3.gehealthcare.com/en/Services>

Building 4B/21 South Street
Parklands Estate
Rydalmere NSW 2116
+61 2 9846 4000

16 Graham Street
Export Park
Adelaide Airport SA 5950
+61 8 8154 0100

Unit 3/310 Ferntree Gully Road
Notting Hill VIC 3168
+61 3 9239 8400

Unit 1/24-28
Belmont Avenue
Belmont WA 6104
+61 8 6465 7500

41 Devlan Street
Mansfield QLD 4122
+61 7 3323 5000

8 Tangihua Street
Auckland NZ 1010
+64 9 353 6700



©2013 General Electric Company – All rights reserved.
GE and GE Monogram are trademarks of General Electric Company.
AssetPlus™ is a trademark of General Electric Company.
GE Healthcare, a division of General Electric Company.

The information contained in this documentation is provided for informational purposes only. While efforts were made to verify the completeness and accuracy of the information contained in this documentation, it is provided "as is" without warranty of any kind, express or implied. The information is based on GE Healthcare's current product plans and strategy, which are subject to change. References in this publication to GE Healthcare products or services do not imply that GE Healthcare intends to make them available in all countries in which GE Healthcare operates.